

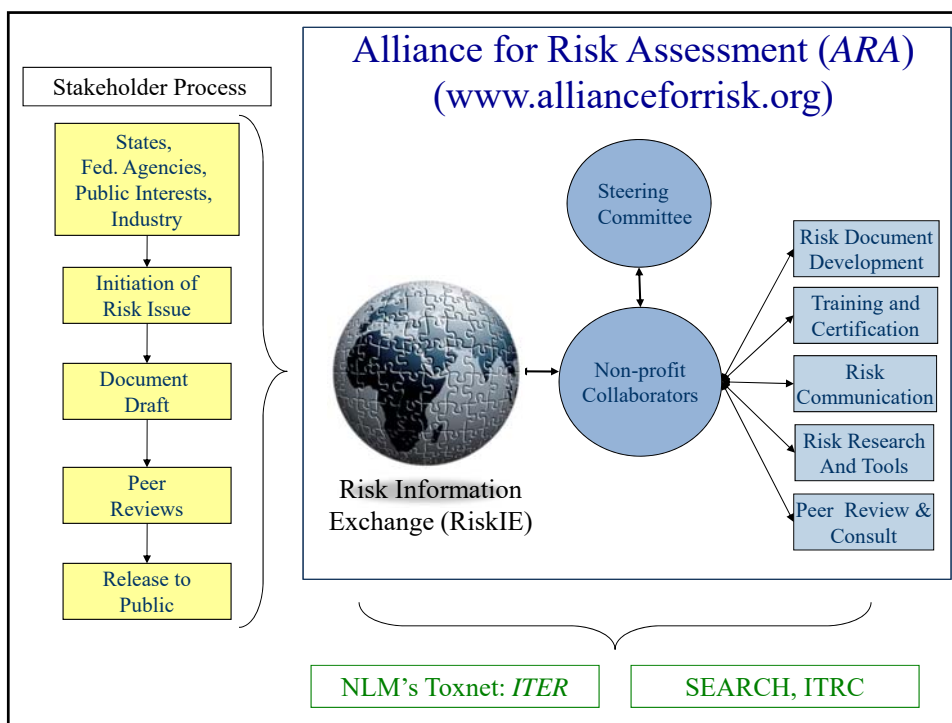
## What is the Alliance for Risk Assessment (ARA)?

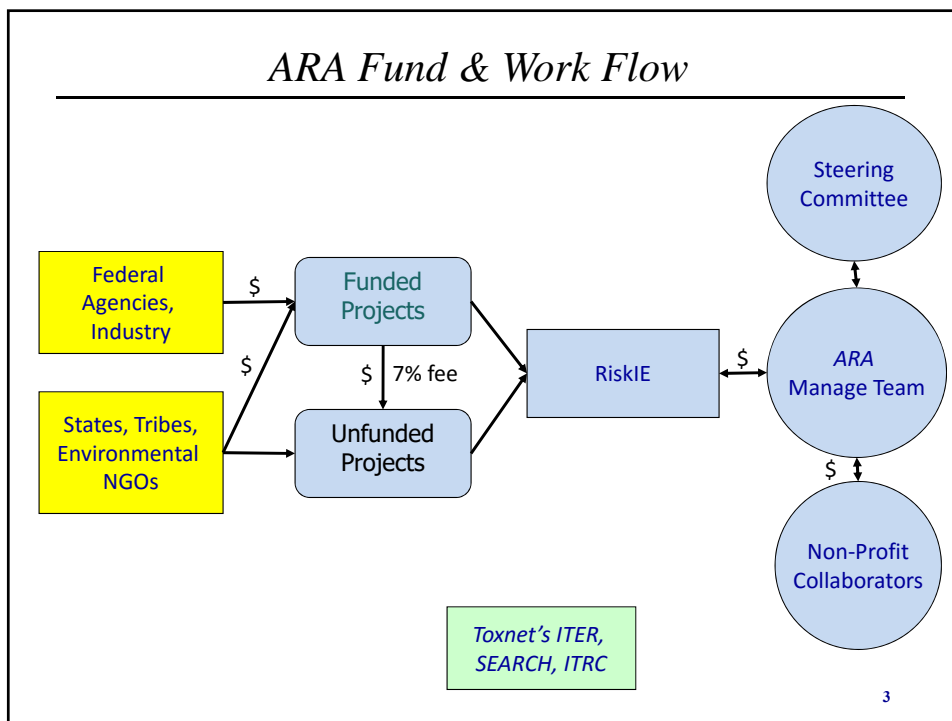
•How is TCE being addressed?

- What are its guiding principles?
- How useful is the Risk Information Exchange (RiskIE)?
- What is the impact of the International Toxicity Estimates for Risk (*ITER*)?
- How does “SEARCH” help?
- How does the funding work?

INDEPENDENT • NON-PROFIT • SCIENCE  
FOR PUBLIC HEALTH PROTECTION

1





## TCE Risk Management

### Purpose

- Develop risk management tools for use of non-cancer endpoint when closing sites.
- Clarify use developmental toxicity in clean-up standards for short term exposures.
- Explore the margin of safety used in RfC for consistency.

### Process Options

- ARA partner prepares material for science panel, who develops management options.
- ARA partner determines management options with likely peer review.
- **The Advisory Committee designates individuals to determine risk management options, with possible peer review.**

## TCE Management: Initial Findings

### Risk Values

- Agency for Toxic Substances and Disease Registry (short term; **rejects** cardiac as critical effect)
- Environmental Protection Agency (IRIS)
- Environmental Protection Agency (AEGL, short term---**rejects?** cardiac as critical effect)
- RIVM
- Health Canada
- California EPA (**rejects** cardiac as critical effect)

### Risk Management Options

- Risk value precision (EPA RfC definition and publications)
- Determine risk above the RfC
  - Categorical regression
  - Benchmark dose (BMD)
  - EPA's J. Swartout uncertainty factor probabilities ("Beyond Science and Decisions...Dose Response" case study 11)
- Biological Equivalents framework
- **Use of existing short term value.**

## TCE Management: Next Step

### Next Meeting

- Next conference call is Wednesday, November 14th at 8 am (Washington, D.C. time).
- All interested parties are invited to attend.
- The call in number is 424 203-8400, code: 833440#.

### Draft Agenda

- Ground rules for participation (Dourson)
- Introductions and individual group reasons for participation (all)
- Review of work done to date (Thompson and Gadagbui)
- Building the coalition (all)
- Good and welfare (all)

## Extra slides

### Alliance for Risk Assessment (ARA)

#### Guiding Principles

- Improved communication among groups
- Transparency in development of products
- Harmonization and consistency in risk assessments
- Shared costs and human resources



# RiskIE

## Risk Information Exchange

[www.allianceforrisk.org/RiskIE.htm](http://www.allianceforrisk.org/RiskIE.htm)



- The **only** place to keep up with In-Progress Risk & Toxicity Assessments
- Includes over 5500 projects being conducted by more than 30 organizations representing 13 countries
- **Free** for anyone to contribute and use

9

# ITER

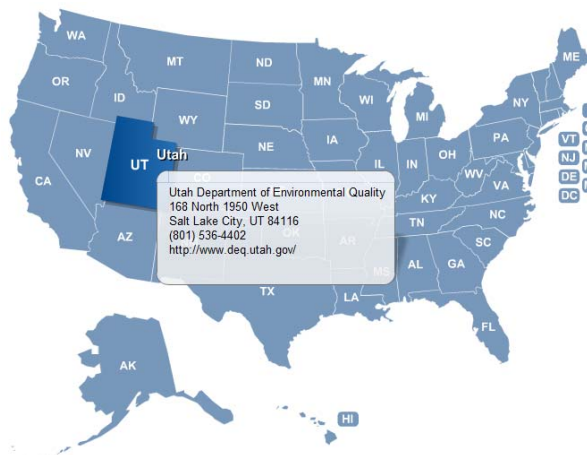
## International Toxicity Estimates for Risk

<http://toxnet.nlm.nih.gov>; <http://www.tera.org/ITER>

- Supplements IRIS by providing chronic human health risk values for 650 chemicals
- Includes a synopsis that explains the basis and differences
- Links to each source document
- Creates a forum for sharing peer reviewed risk values; recent values added include acrylamide, dioxin, decaBDE, inorganic manganese, hexavalent chromium, and perchlorate

## SEARCH:

### State Environmental Agency Risk Collaboration for Harmonization (BETA)



- Risk Assessment department and contact information for each State
- State risk assessors can identify and contact other state risk assessment divisions for technical assistance in the identification and selection of chemical risk values

11

## TCE Management: RfD/C Probabilities

Figure 1. Comparison of RfD Values for 3 IRIS Compounds with RfD of 0.03

